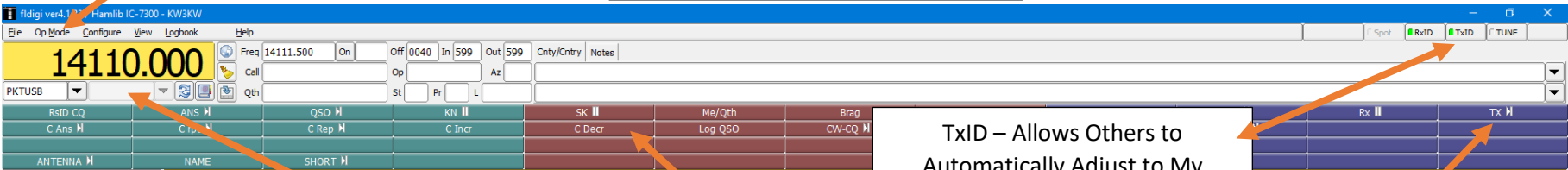




FLDigi GUI Overview

Op Mode Drop Down



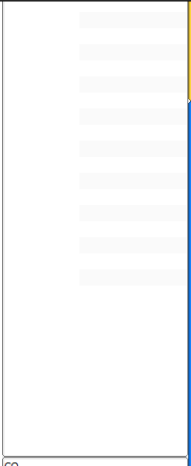
Frequency Panel
PKTUSB – Internal Sound Card
USB D – External Sound Card

Band Width Panel
Blank – Internal Sound Card
Number – External Sound Card

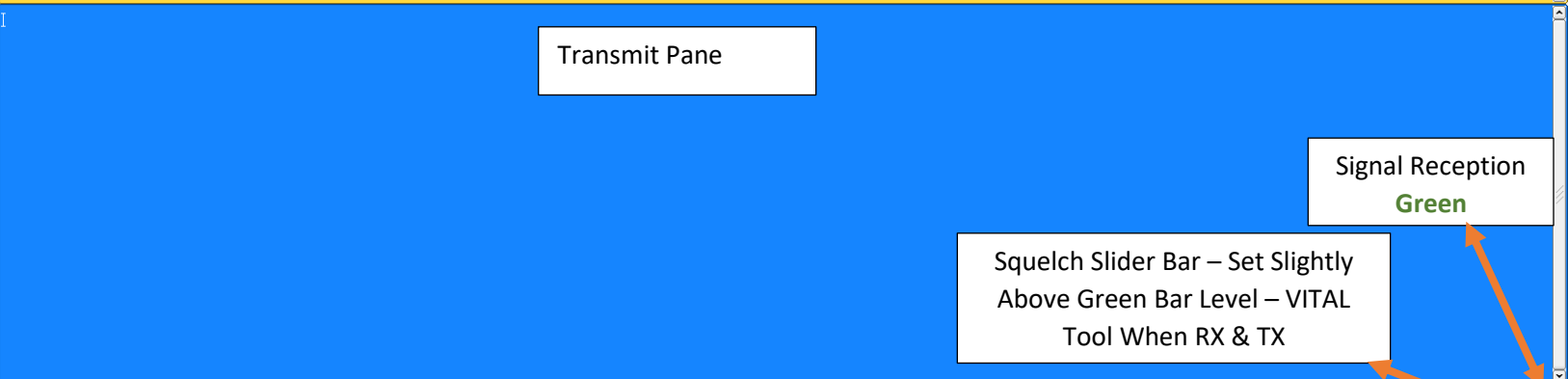
Macros

TxID – Allows Others to Automatically Adjust to My Mode IF On The Same Frequency AND If they Have RxID Enabled

TX Button



Receive Pane



Transmit Pane

Signal Reception
Green

Squelch Slider Bar – Set Slightly Above Green Bar Level – VITAL Tool When RX & TX



Mode Speed

Move Cursor to Offset Portion Of the Band

Transmit Audio Level Setting for Your ALC

Audio Input – Green Is Good, Red Is Overdrive, Black is Too Low
Audio Software

SQL Button - ON Turns **Yellow**



fldigi ver4.1.23 / Hamlib IC-7300 - KW3KW

File Op Mode Configure View Logbook Help

CW
Contestia
DominoEX
PKTU FSQ
Hell
IFKP
MFSK
MT63
OFDM
Olivia
PSK
QPSK
8PSK
PSKR
RTTY
THOR
Throb
WEFAX
Navtex/SitorB
WWV
Freq Analysis
Frequency Measurement Test
NULL
SSB

500

Freq 14
Call
Qth

ANS
C rpt

NAME

OL 4-125
OL 4-250
OL 4-500
OL 4-1K
OL 4-2K
OL 8-125
OL 8-250
OL 8-500
OL 8-1K
OL 8-2K
OL 16-500
OL 16-1K
OL 16-2K
OL 32-1K
OL 32-2K
OL 64-500
OL 64-1K
OL 64-2K
Custom...

**ALWAYS Select
"Save" When
Finished**

fldigi ver4.1.23 / Hamlib IC-7300 - KW3KW

File Op Mode Configure View Logbook Help

14

500

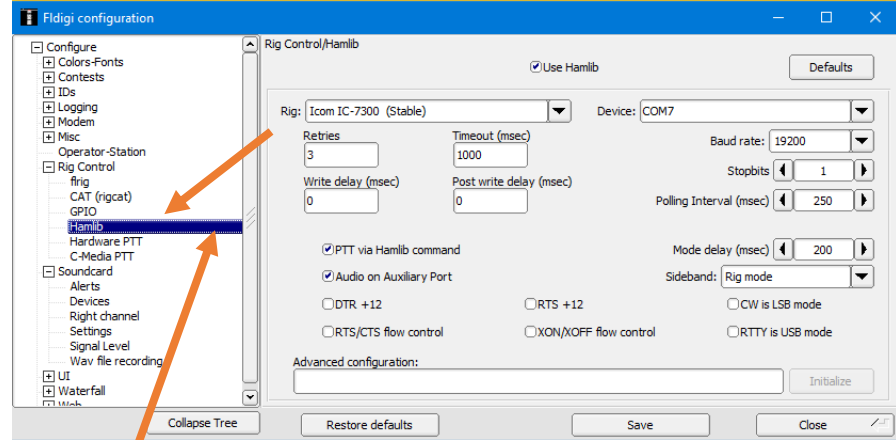
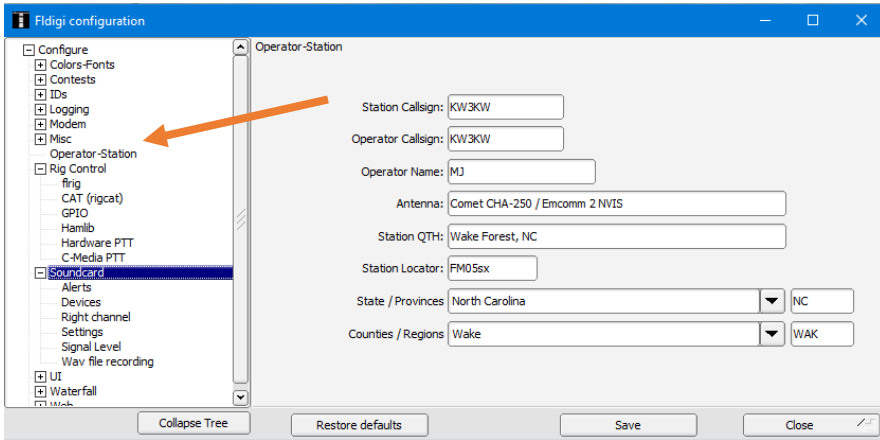
RTUSB

Config Dialog
Save Config
Notifications
Test Signals

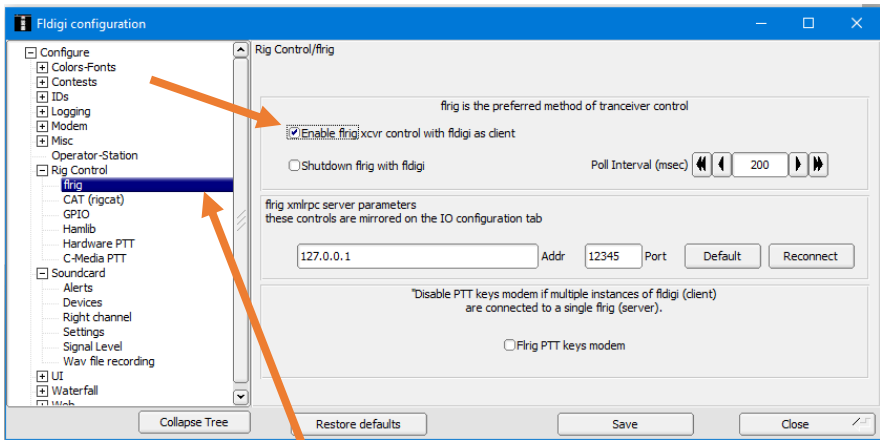
RsID CQ
ANS
C Ans
C rpt

ANTENNA
NAME

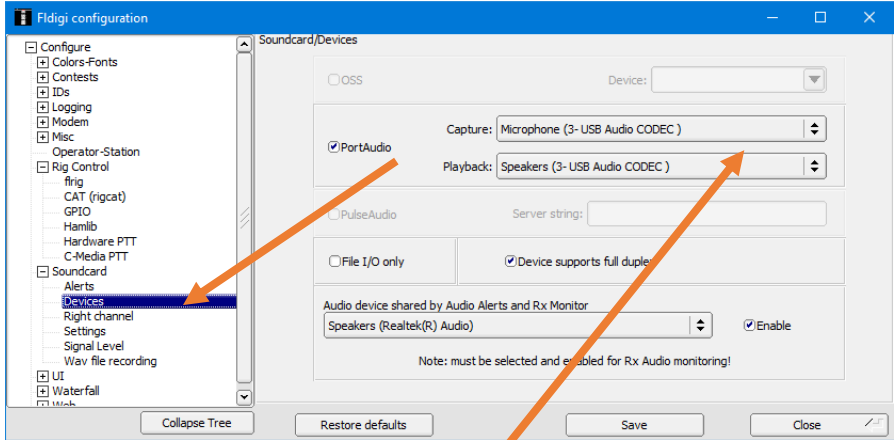
ebO



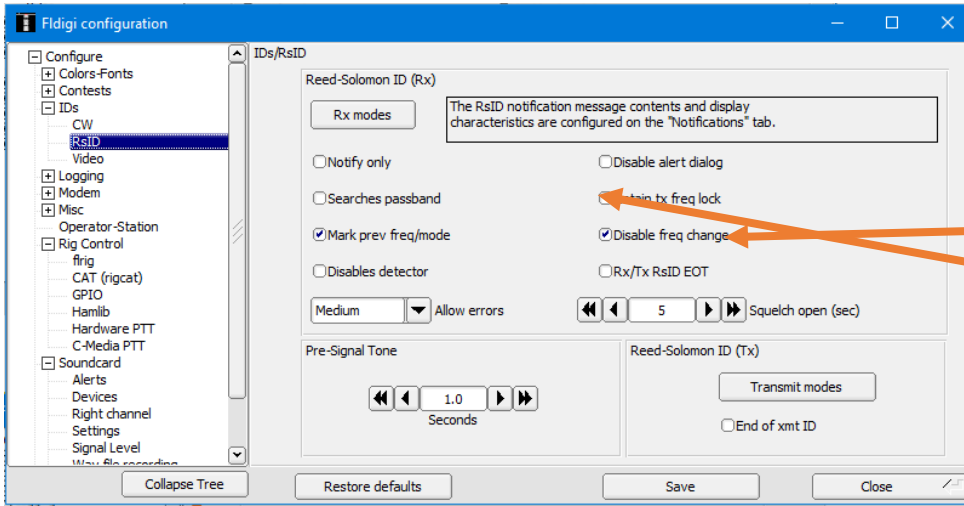
Internal Rig Control Settings – Select “Hamlib”



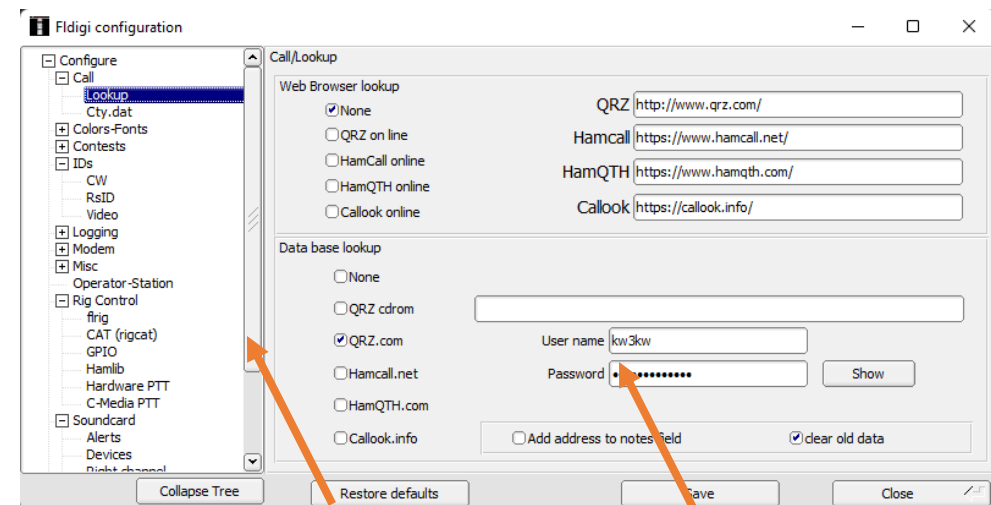
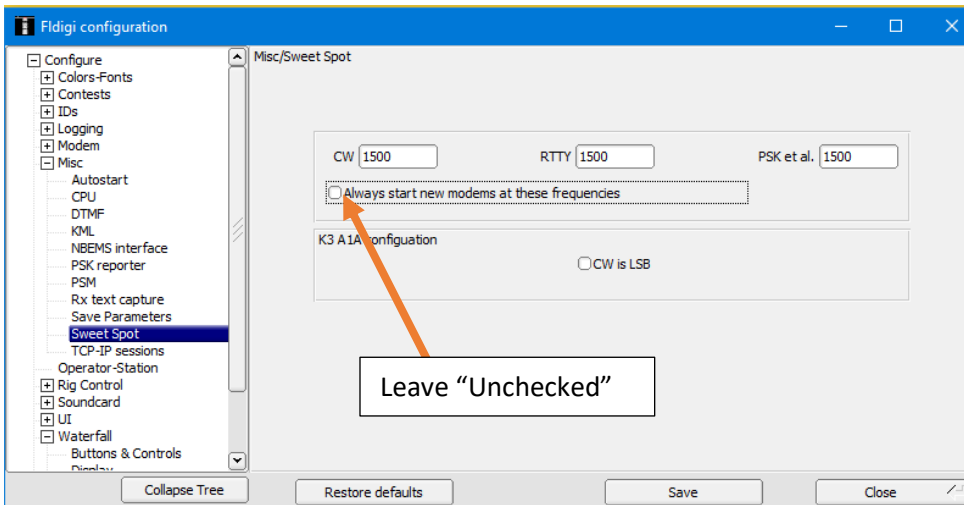
**External Rig Control Settings
FLRig**



Digirig – Use “USB PNP”



Suggested By NBEMS (Narrow Band Emergency Message System) For EMCOMM 11/03/2022



Allows Fast QRZ.com Callsign Lookup – YOUR Log In Info

NOTES: Always “Save Config” When Making Changes



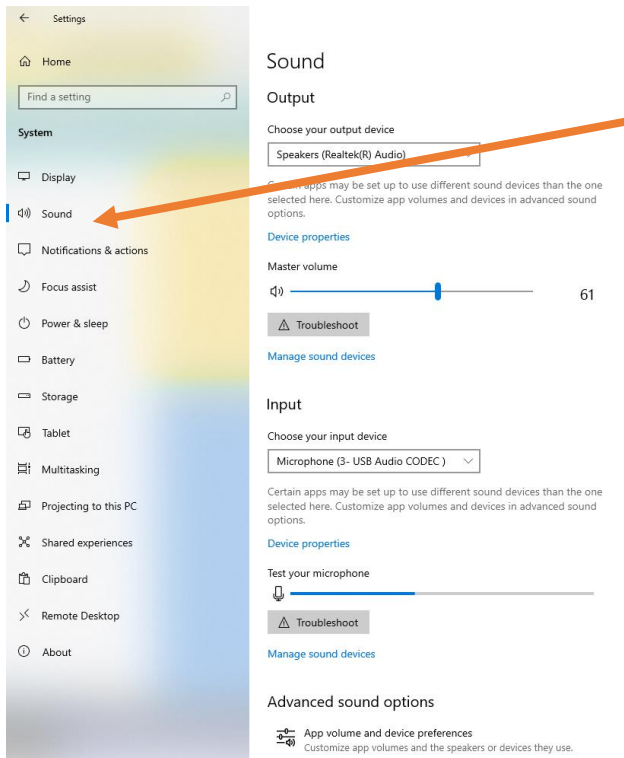
Turn Off: NB, NR, NOTCH, AFC, SQL

Turn On: ACG – FAST or Turn OFF

Center Frequency – 1,500

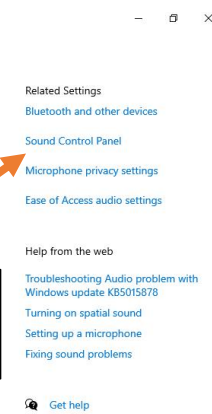
Upper Side Band – Always

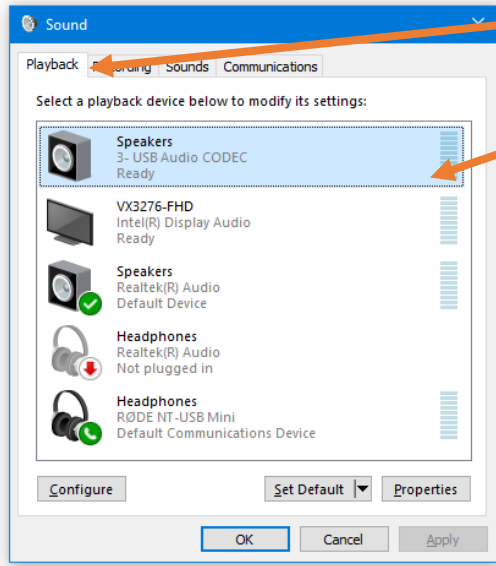
Setting ALC Correctly



**Under Settings In
Windows**

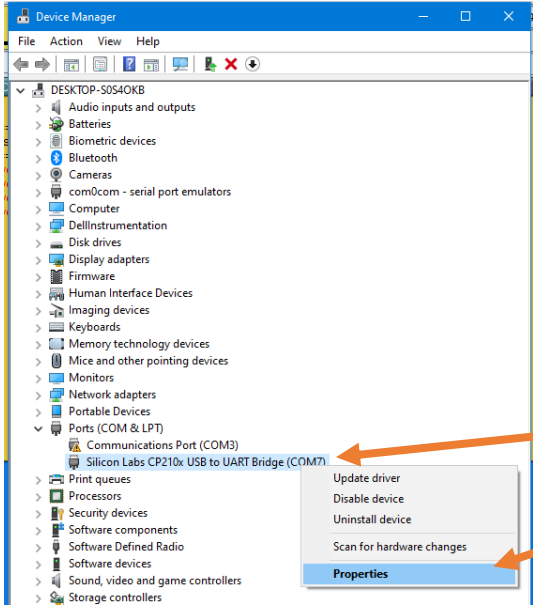
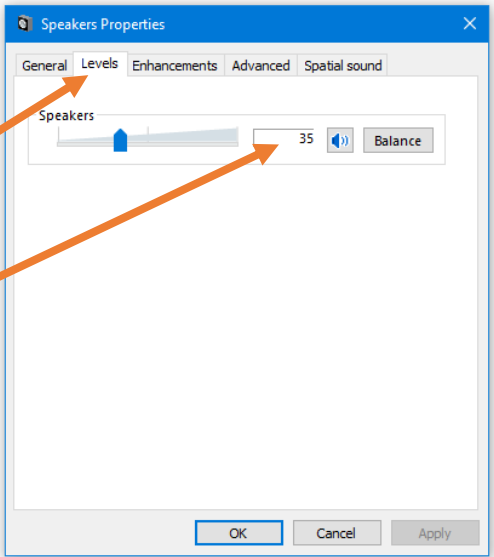
**Select "Sound Control
Panel"**





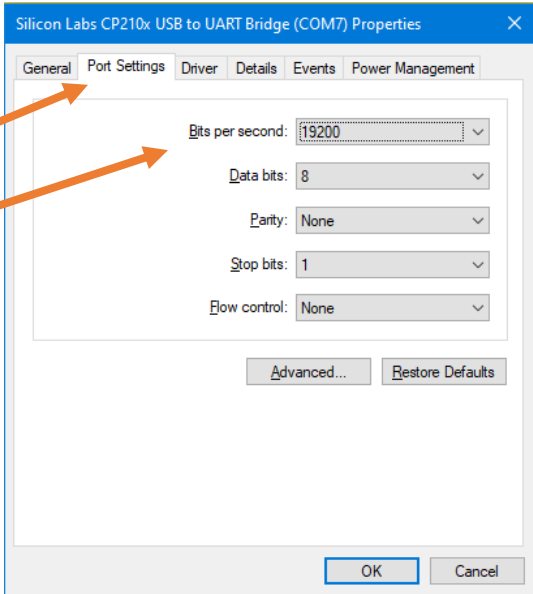
Select "Playback"
RT Mouse Click Select
"Properties"

Select "Levels"
Move To 50 %
Adjust As Needed
Select "OK"



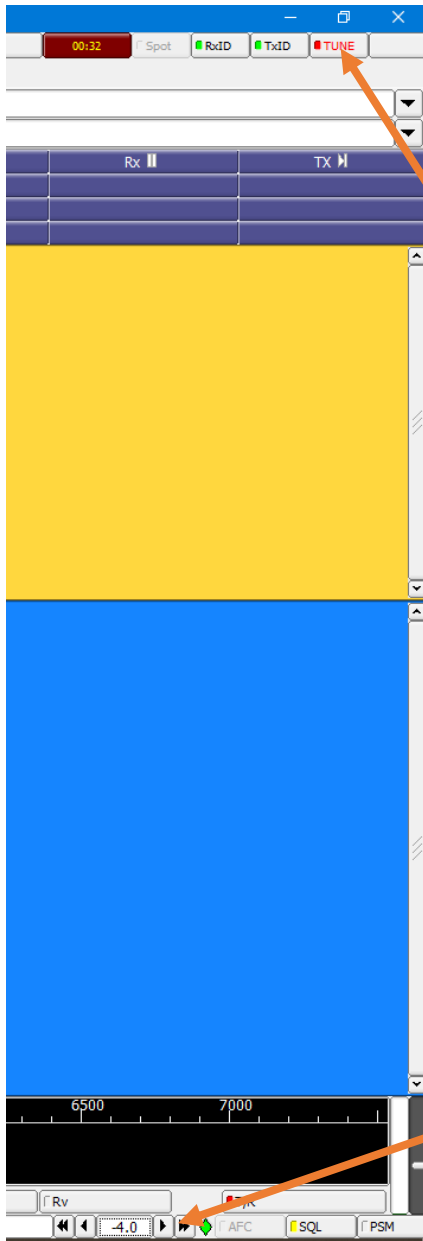
Select "Port Settings"
Baud Rate MUST
Match Rig & Software

RT Mouse Click "Silicon
Labs Com Port"
Click "Properties"





Speaker Settings – TX Setting



Select "Tune"
Look At **ALC** On Your
Rig

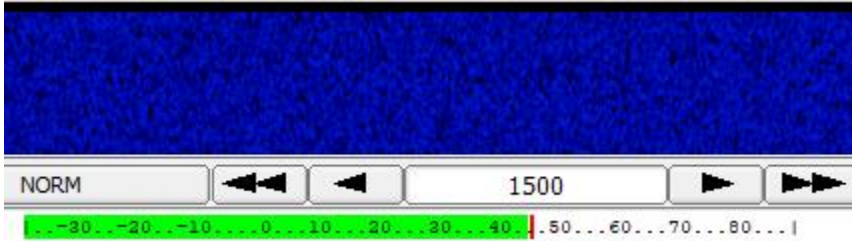
While Looking At ALC
Move Until ALC Is Barely
Registering on The Rig Meter

Too Low = Less Power Output
Too High = Distorted Signal





Microphone Settings – RX Setting



Microphone Adjustments
50– 60dB (55dB Works Best for Me)
Move Slider Until You Achieve Best Results

