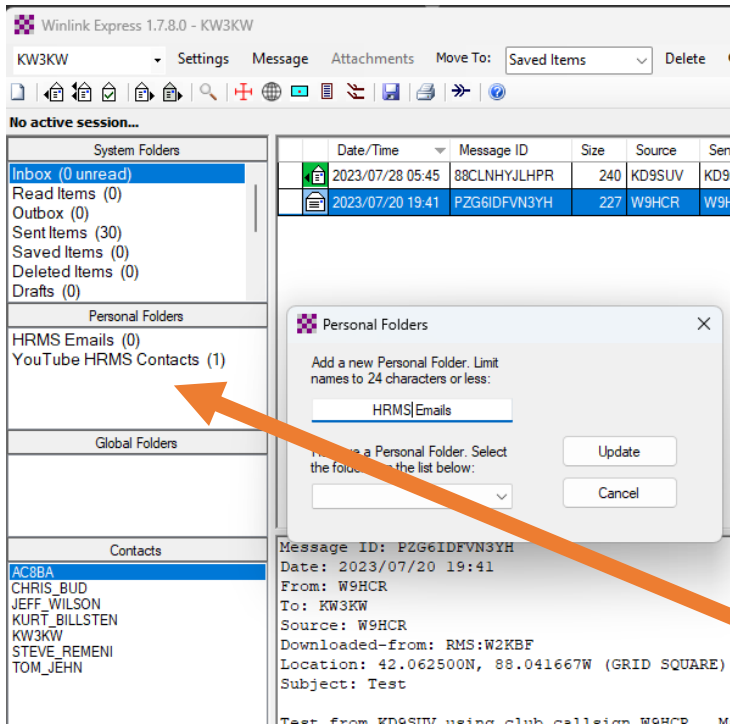


Winlink Express Advance Settings

Adding Folders



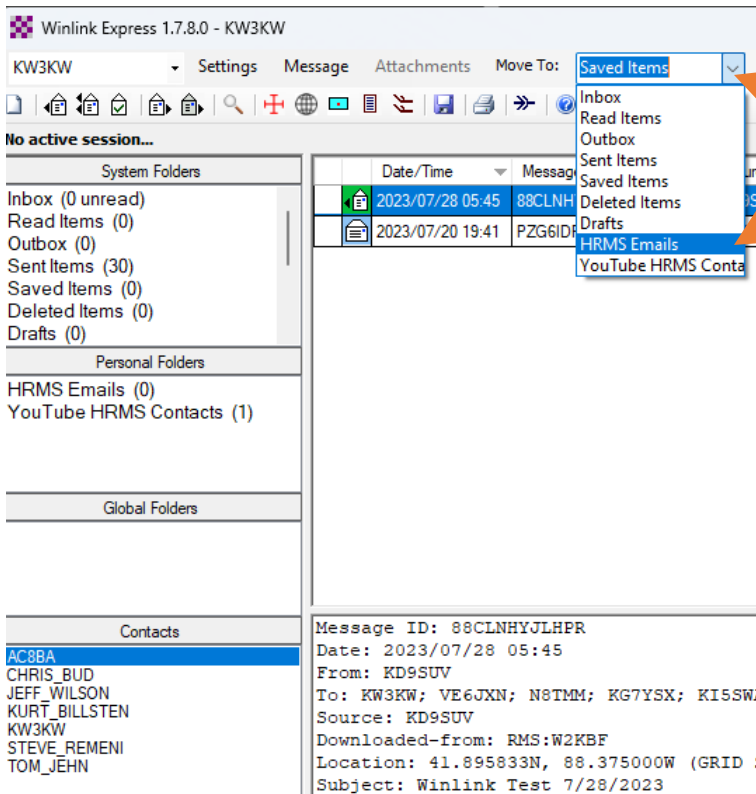
Personal folders are associated with a specific callsign. When you select a different callsign, the personal folders defined for that callsign will be displayed.

I don't follow this since they allow for up to 24 characters. Who's call sign is 24 characters?

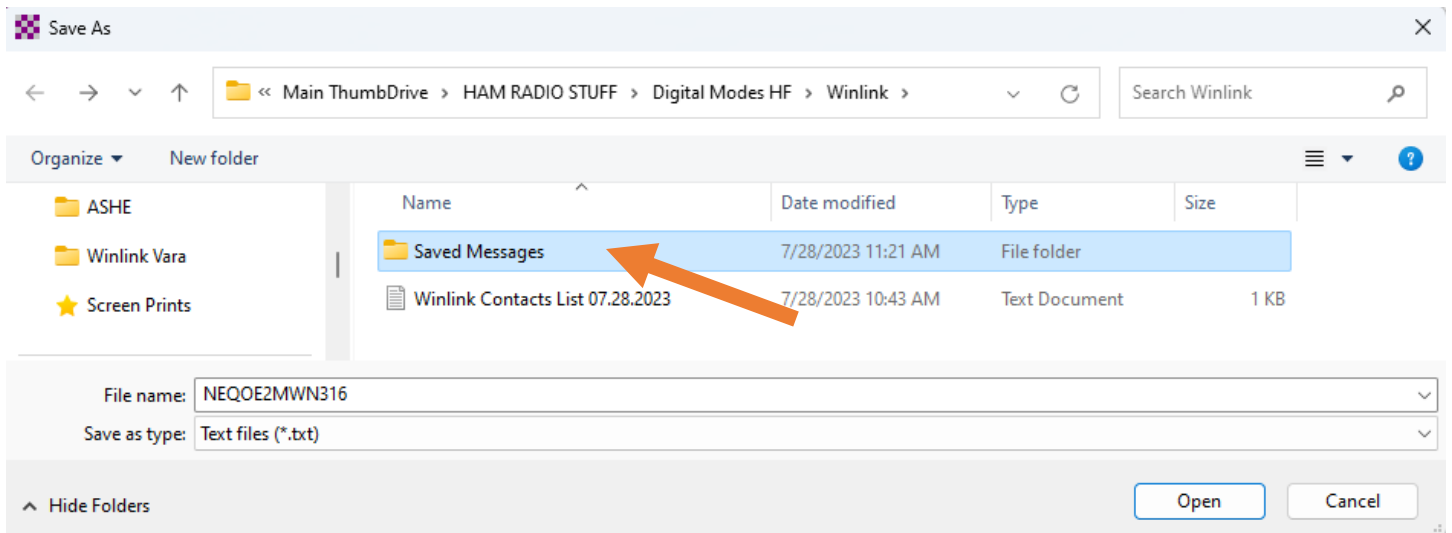
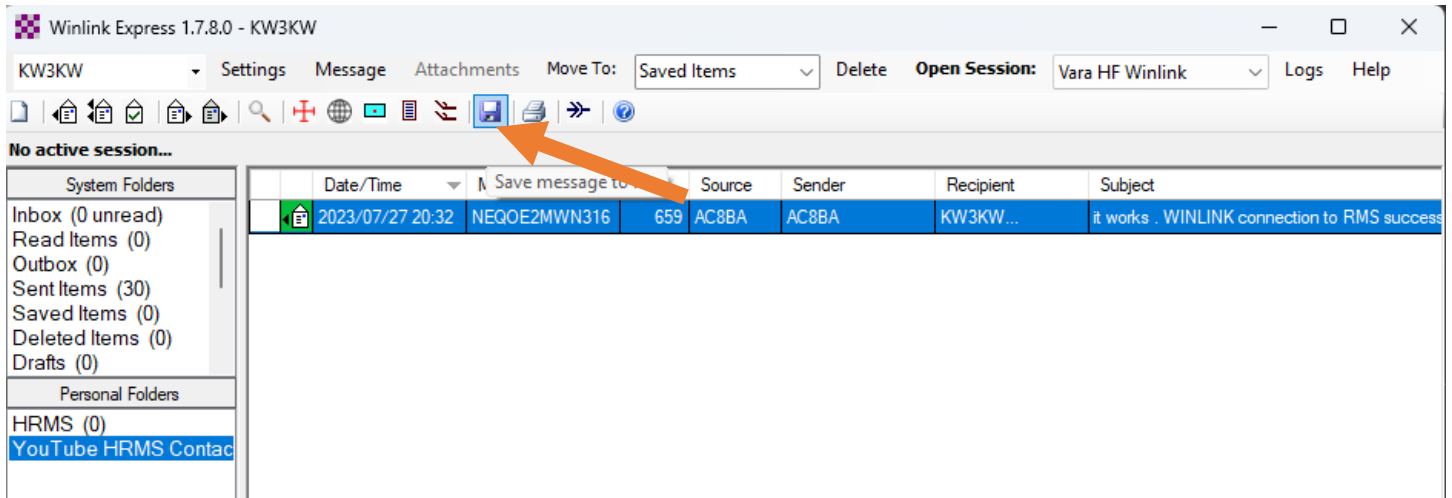
I use this like File Explorer Folders.

Rt. Mouse Click

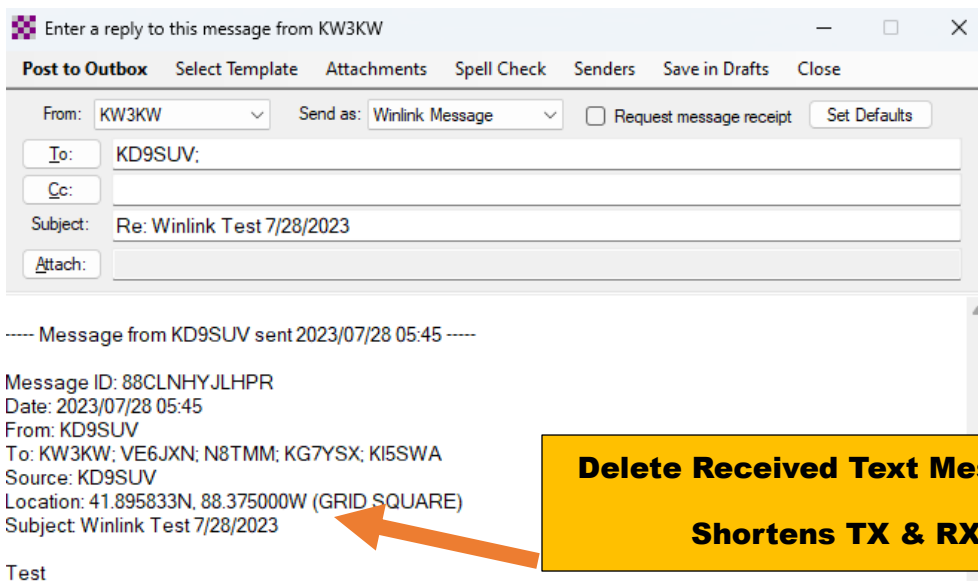
Moving Messages to a Folder



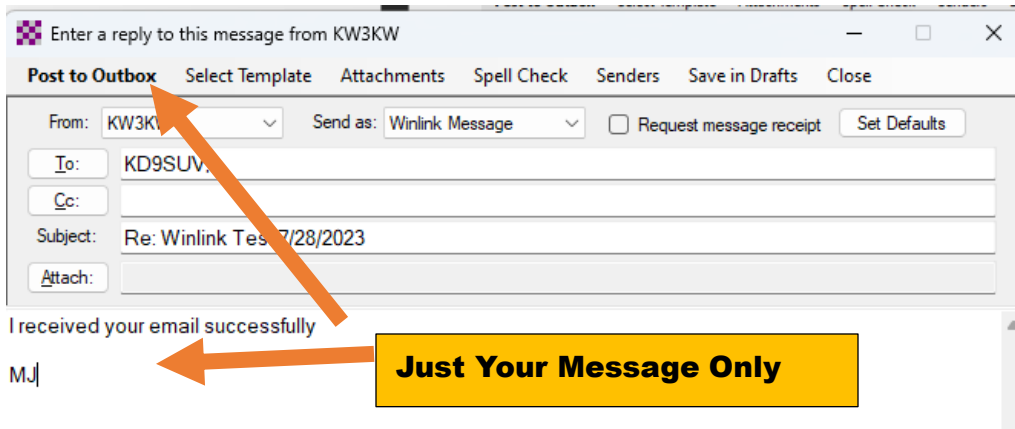
Saving Messages to Computer



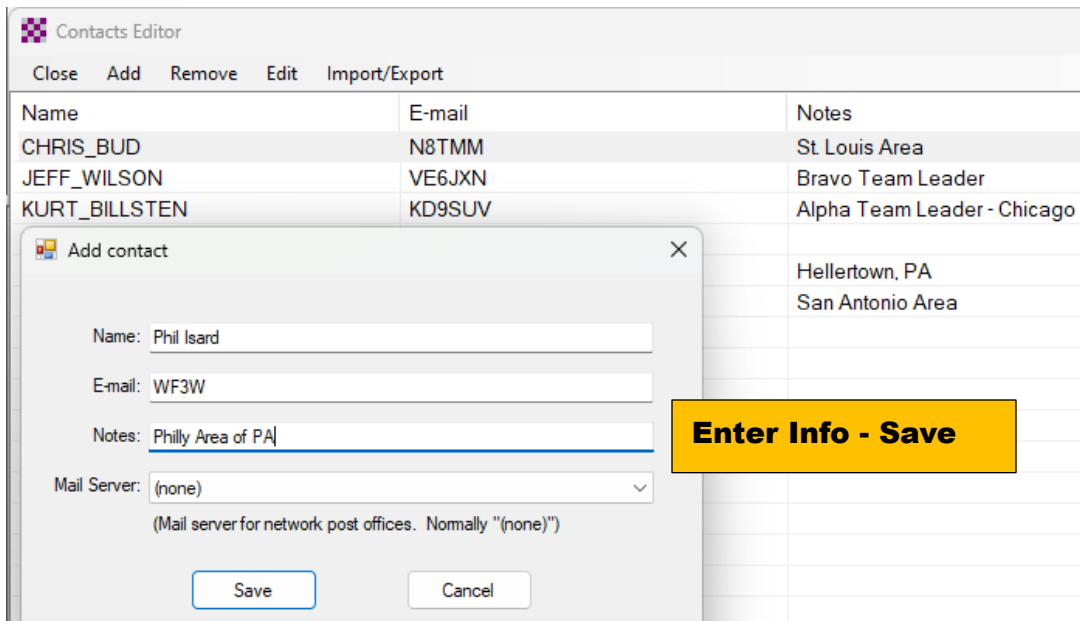
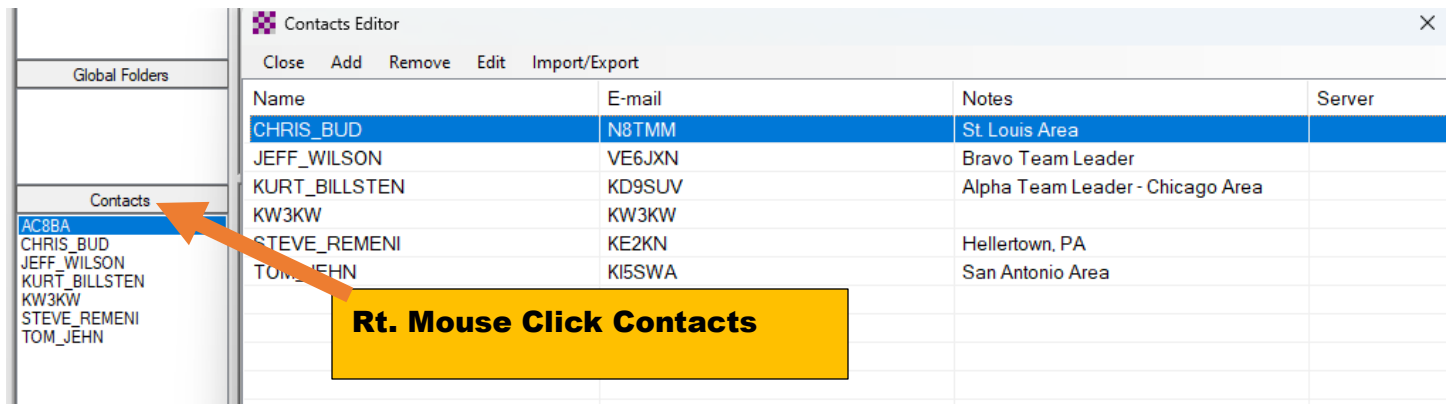
Best Practice Replying to Email



Delete Received Text Message Section
Shortens TX & RX Times

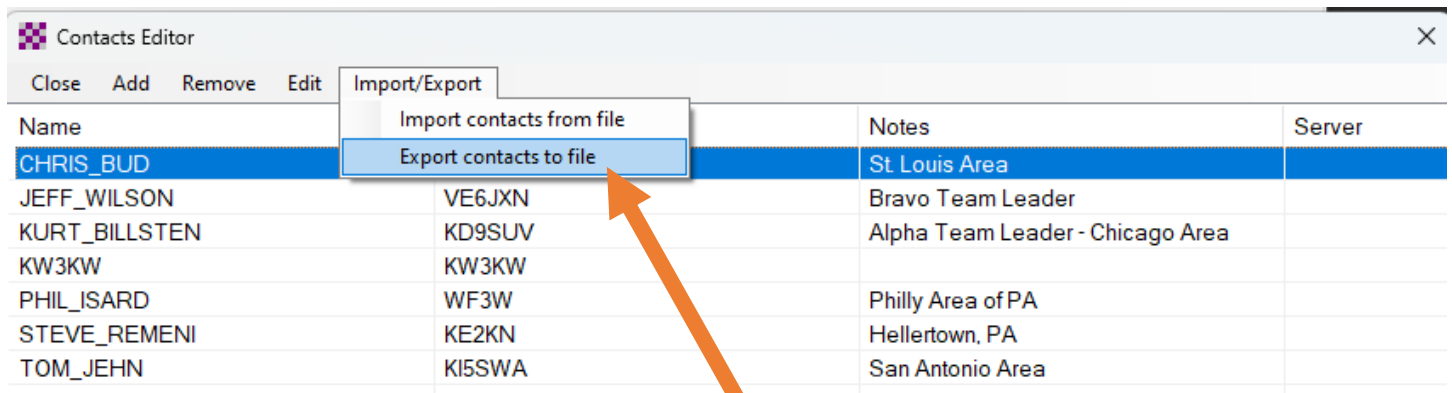


Adding Contacts



Restart Winlink to See the List

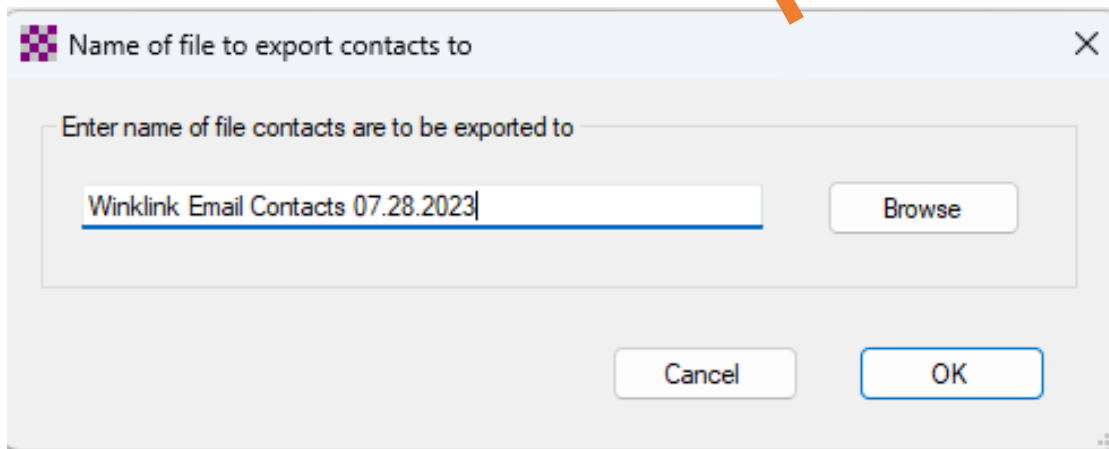
Exporting & Saving Contact List



Contacts Editor

Close Add Remove Edit Import/Export

Name	Notes	Server
CHRIS_BUD	St Louis Area	
JEFF_WILSON	Bravo Team Leader	
KURT_BILLSTEN	Alpha Team Leader - Chicago Area	
KW3KW		
PHIL_ISARD	Philly Area of PA	
STEVE_REMENI	Hellertown, PA	
TOM_JEHN	San Antonio Area	



Name of file to export contacts to

Enter name of file contacts are to be exported to

Winklink Email Contacts 07.28.2023

Browse

Cancel OK

Open Session Icon - Fast & Easy



Winlink Express 1.7.8.0 - KW3KW

KW3KW Settings Message Attachments Move To: Saved Items

In Vara HF Winlink session.

System Folders Date/Time Message ID Open session

Fast Way to Find Workable Gateways

Zoom IN or Out Select Channel

Varas RMS Map

Zoom-In Zoom-Out Callsign: W2KBF Bearing: 033 Range: 311 miles Channels: 7101.500 V2300 (46) Select Channel

N2LEE
38.9792 N 77.3750 W
Range: 216 mi
Bearing: 016
Path quality: 46

Use mouse wheel to zoom in/out. Right click map and drag to scroll. See Settings/Map Settings for options.

Exit Settings Switch to Peer-to-Peer Channel Selection Map Forecast Auto-connect Next chan. Start Stop Abort

W2KBF Center Freq. (kHz): 7101.500 Dial Freq. (kHz): 7100.000 Bearing: 033 Quality: 46

Favorites: AJ4FW @ 3595.000 [2750] (36) Select Add to favorites Remove from favorites

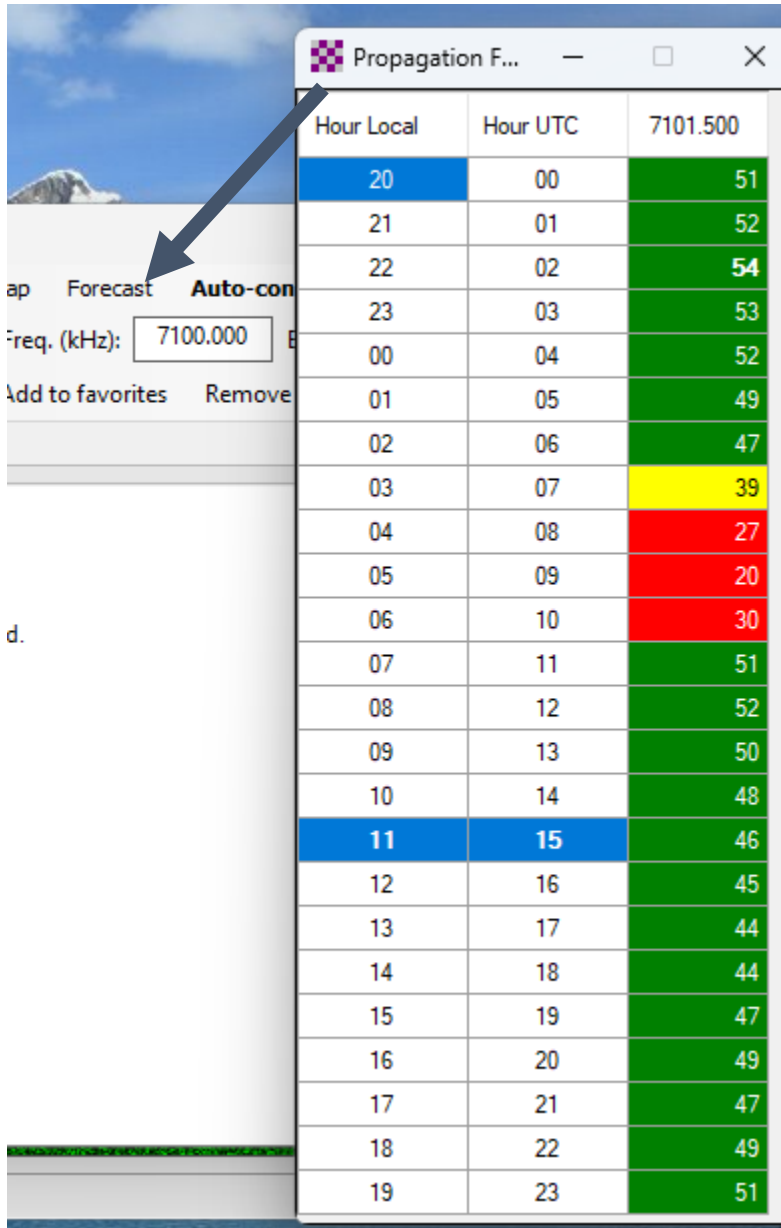
Click MAP

Look for GREEN Icon Bubble on Map

Path Quality is Indicated

NOTE: Direction of MOST GREEN Bubbles Are a Good Indication of What Direction You Should Look for BEST Connection to a Workable Gateway

Forecast Propagation for a Specific Gateway



The screenshot shows a software interface with a 'Forecast' button and an 'Auto-con' button. A frequency input field is set to 7100.000 kHz. A 'Propagation F...' window is open, displaying a table of forecast data. The table has three columns: 'Hour Local', 'Hour UTC', and '7101.500'. The data is color-coded: green for values 45-52, yellow for 39, and red for 20, 27, and 30. The current local hour is 11, and the current UTC hour is 15.

Hour Local	Hour UTC	7101.500
20	00	51
21	01	52
22	02	54
23	03	53
00	04	52
01	05	49
02	06	47
03	07	39
04	08	27
05	09	20
06	10	30
07	11	51
08	12	52
09	13	50
10	14	48
11	15	46
12	16	45
13	17	44
14	18	44
15	19	47
16	20	49
17	21	47
18	22	49
19	23	51